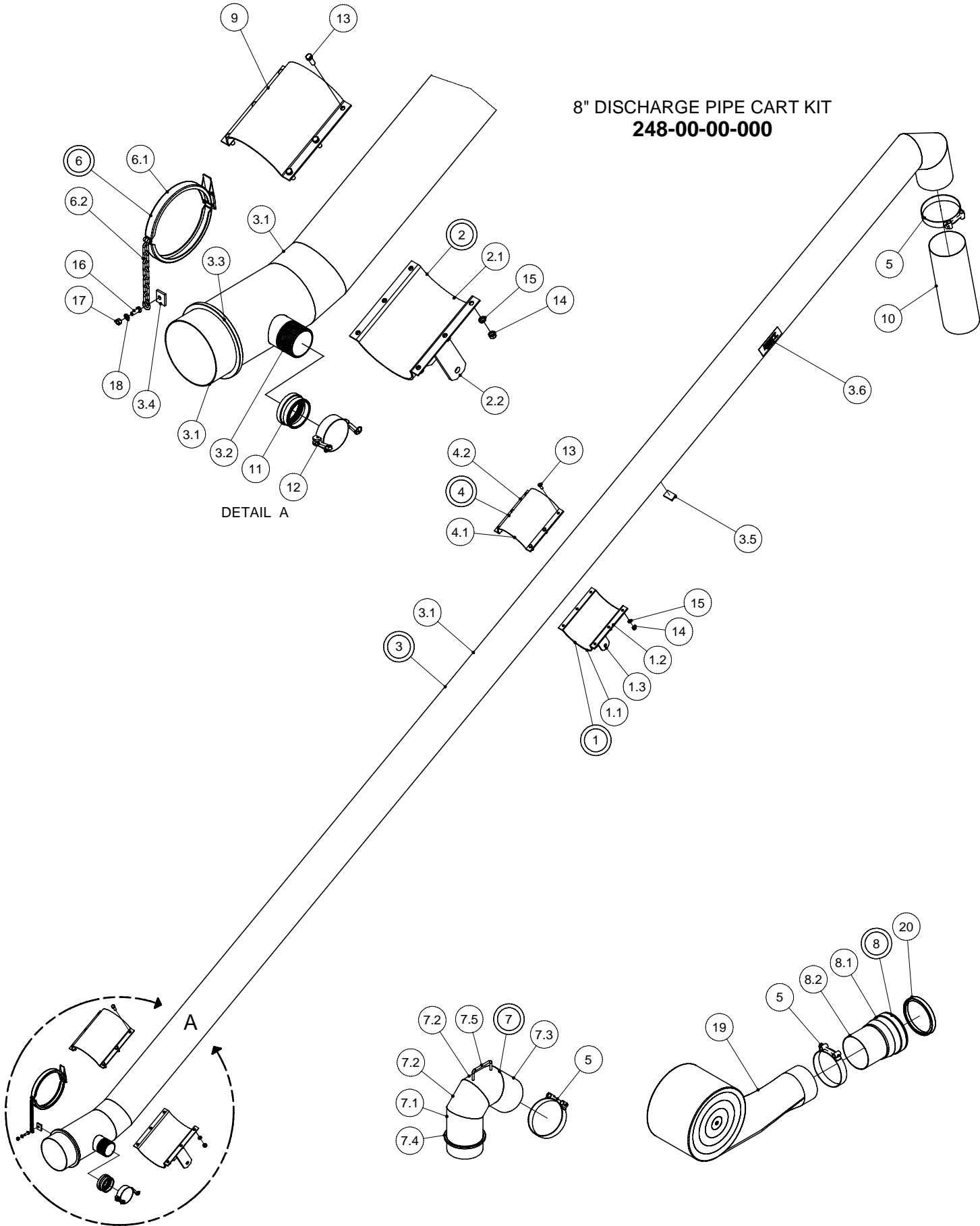




8" DISCHARGE PIPE

8" DISCHARGE PIPE CART KIT
248-00-00-000



8" DISCHARGE PIPE

PARTS LIST			
ITEM	PART NUMBER	DESCRIPTION	QTY
1	248-04-00-000	UPPER PIPE SLIDING CLAMP ASSY	1
1.1	248-04-01-018	UPPER CLAMP TUBE	1
1.2	248-04-01-019	UPPER CLAMP BOLT PLATE	2
1.3	248-03-00-017	UPPER CLAMP PIVOT BRKT	2
2	248-03-00-000	LOWER PIPE CLAMP ASSY	1
2.1	242-00-00-221	CONE CLAMP ON BRKT	1
2.2	248-03-00-050	LOWER CLAMP PIVOT BRKT	2
3	248-05-00-000	8" DISCHARGE PIPE ASSY	1
3.1	248-05-00-020	8" DISCHARGE PIPE	1
3.2	R02097	3" x 4" LONG TOE ALUM. NIPPLE	1
3.3	R02536	8" MALE ALUM. BANDLOCK RING	1
3.4	248-05-00-036	CHAIN LUG	1
3.5	248-05-00-038	STOP LUG	1
3.6	R09502	"HUSKY" DECAL	1
4	248-04-01-000	UPPER PIPE SLIDING CLAMP ASSY	1
4.1	248-04-01-018	UPPER CLAMP TUBE	1
4.2	248-04-01-019	UPPER CLAMP BOLT PLATE	2
5	R02484	8" SUCTION HOSE CLAMP	3
6	244-09-00-000	8" CLAMP & CHAIN ASSY	1
6.1	R02488	8" RINGLOCK CLAMP	1
6.2	250-97-00-297	CLAMP CHAIN	1
7	248-06-00-000	8" - 45° PUMP ELBOW W/RING ASSY	1
7.1	248-06-00-024 A	ELBOW PC - A	1
7.2	248-06-00-024 B	ELBOW PC - B	2
7.3	248-06-00-024 C	ELBOW PC - C	1
7.4	244-08-00-307	CLAMP RING	1
7.5	244-12-03-341	CONE HANDLE	1
8	248-14-00-000	BELL AND DISCHARGE PIPE ASSY	1
8.1	R02361	8" ALUMINUM BELL END	1
8.2	248-14-00-034	8" EXTENSION PIPE	1
9	242-00-00-221	CONE CLAMP ON BRKT	1
10	248-00-00-069	8" DISCHARGE PIPE FLEX HOSE	1
11	R02778	3" CAMLOCK M->F NPT	1
12	R02784	3" F CAMLOCK CAP	1
13	R07671	7/16 x 1 1/4 UNC HEX BOLT	12
14	R07784	7/16-14 UNC HEX NUT	12
15	R07804	7/16" LOCK WASHER	12
16	R07619	3/8 x 1 UNC HEX BOLT	1
17	R07783	3/8-16 UNC HEX NUT	1
18	R07803	3/8" LOCK WASHER	1
19	248-00-00-021	8" PVC LAYFLAT HOSE	1
20	R02497	8" RAINWAY GASKET	1

10" DISCHARGE PIPE

10" DISCHARGE PIPE CART KIT 249-00-00-000

