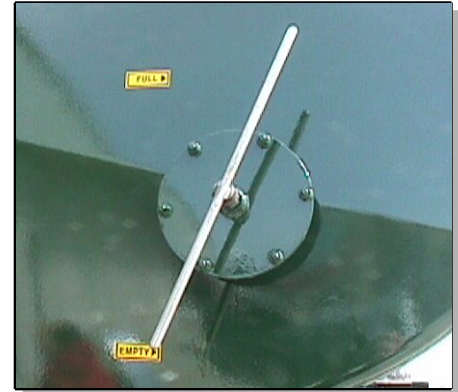




HUSKY SLIM LINE

5000 US Gal., 4000 CDN Gal., 18000 Litres
28L x 26, 12 Ply Turf type, knobby tread 24 PSI
 3744 (square inches on ground)
 116" High 126" overall width
 Tank 101" wide 75" high 18 ft long

Tank ends flanged and reinforced 3/16" high strength steel
 Tank shell thickness 3/16" high strength steel
 2 full baffles 3/16" high strength steel
 Seams welded solid inside & outside
 Light kit (brake & tail) Standard
 Sills are U shaped, 1/2" plate material with 9 square ft tank contact 54" apart
 Tongue 75" in front of spreader 4 x 8" rectangular tubing x 3/8" material
 Single or double hitch with 8000 lbs tongue jack



Sight Guage Optional



Optional Spread Height 4 FT

6" discharge Up to 2400 gallon per minute adjustable
 8" discharge Up to 3600 gallon per minute adjustable
 1000 , 540 RPM Fan with hi efficiency blades
 Timken taper bearings, grease filled chamber double seals, purgeable
 Constant velocity PTO, shear protected 1 3/8 6T, 1 3/8 21T, 1 3/4 20T
 Hydraulic drive Optional
 Up to 60 ft Spreading pattern
 Discharge height 135", optional 4 ft



Walking tandem axle 5 year warranty (non commercial)
 4 1/4" stress proof HT SR spindle 16,000 LBS
 Axle weighs 3252 lbs (1475 kg) (without tires)
 80,000 lbs (36,288 kg) capacity
 10 bolt Hub greaseable 11.25" bolt circle 8 5/8" pilot hole greaseable

PAINT

The tank is steam cleaned with phosphate blown dry and heated
 Primed with an epoxy primer and finished with two coats of Urethane paint with hardener
 Inside is cleaned and painted with aluminized epoxy

WEIGHT

Empty 13,082 lbs (5,936 kg)
 Loaded 54,732 lbs. (24,826 kg)